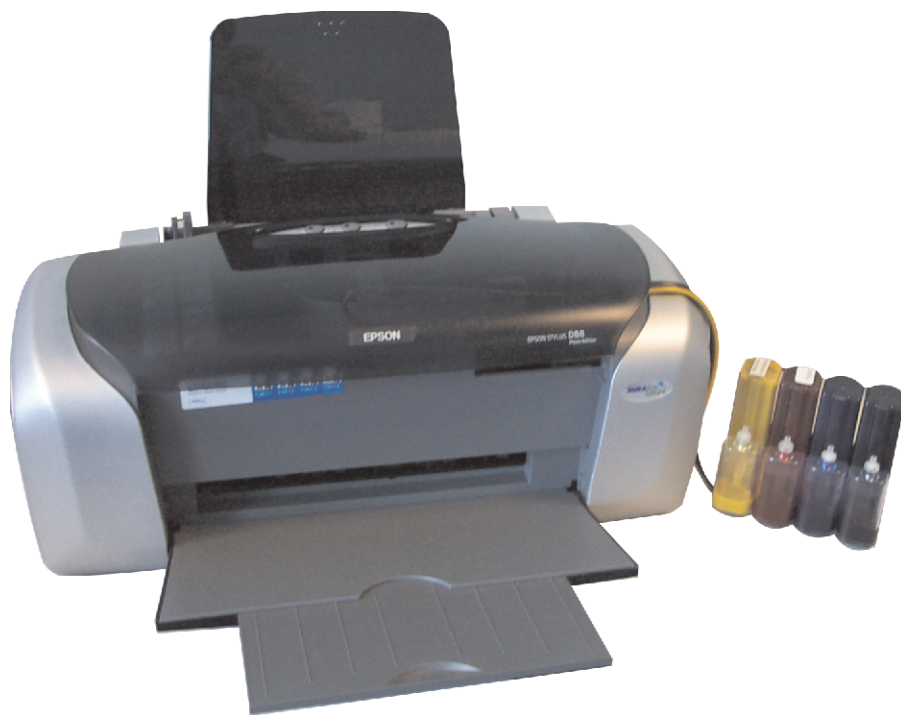


Subli-Print®

Epson D88

Instruction Manual



xpres®
Transfer Technology

Tel: 01332 855 085

Technical Support: 01332 858 333

Fax: 01332 855 080

WWW.XPRES.CO.UK

CONTENTS

Section 1	Driver Installation & Setup
Page 1	Installing & setting up the Epson D88 Printer
Section 2	CorelDRAW setup
Page 2-3	Installing & setting up the Xpres Subli-Print colour profile
Section 3	Printing
Page 3	Printing with the Xpres Subli-Print colour profile
Section 4	Bulk feed system
Page 4-10	Installing the Subli-Print bulk feed system
Section 5	Templates
Page 11-12	Working with CorelDRAW sublimation templates
Page 12	Tips on using templates
Section 6	Sublimation ink
Page 12	Tips on using Subli-Print ink
Section 7	Sublimation paper
Page 12	Sublimation paper usage and tips
Section 8	CorelDRAW
Page 13	Introducing CorelDRAW and its tools
Page 14	CorelDRAW's most common tools
Page 14-15	Common CorelDRAW tasks
Section 9	Printable's
Page 15	Sublimation printable's hints and tips
Section 10	Troubleshooting
Page 16	General troubleshooting and tips

Installing & Setting up the Epson D88 printer

Insert the Epson Stylus D88 software CD-ROM into your CD-ROM drive. The CD will auto run. Select 'Custom Install' from the menu, as in diagram 1 below. When Diagram 2 appears click 'Printer Driver'. It will display diagram 3, click OK and it will copy files to your computer. Make sure the *USB* cable is connected to the PC and printer, then turn on the printer as instructed in diagram 4. After the utility has found your printer it will confirm this as in diagram 5. The Epson D88 has now been successfully installed. Click OK.

Now follow the Epson D88 driver setup below.

Diagram 1

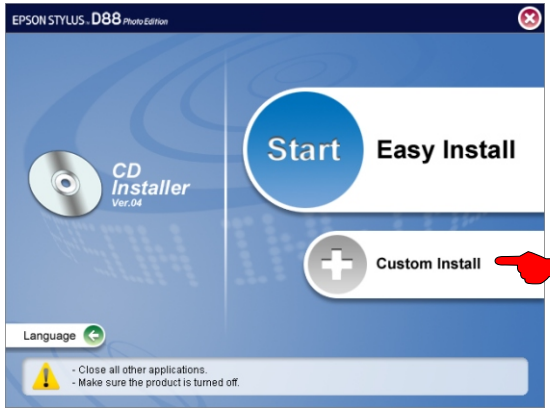


Diagram 4

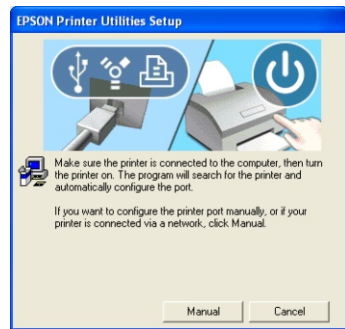


Diagram 2

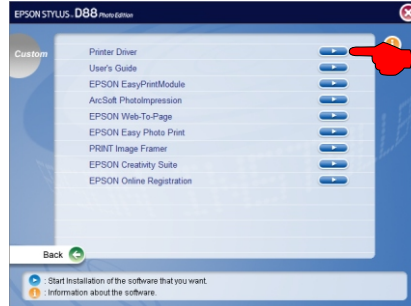


Diagram 3

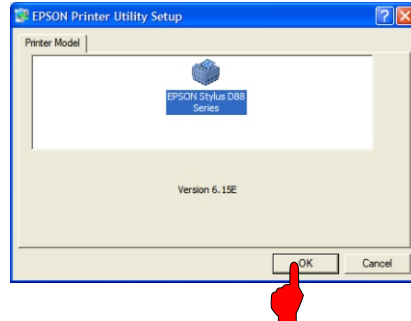
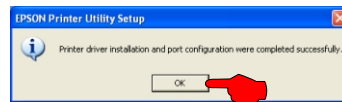


Diagram 5



After installation

The Epson Status Monitor needs disabling before use. Follow the below steps.

1. Go to the printers and faxes folder.
2. Right click on the D88 and select properties.
3. Click printing preferences.
4. Click the Maintenance tab.
5. Click on the 'Speed & Progress' button.
6. Un-tick 'Show Progress Meter'.
7. Un-tick 'Disable EPSON status monitor 3'.
8. Click OK three times to close the driver boxes down.

Browse to the Printers and Faxes folder. Right click on the Epson D88 printer and click on 'Properties'. Click on 'Printing preferences as in diagram 6, then follow the diagrams below.

Diagram 6

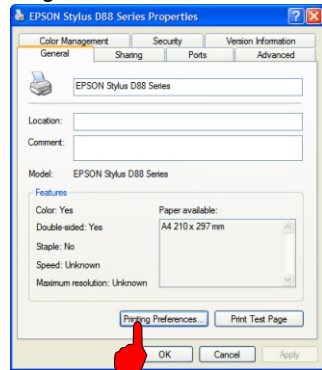


Diagram 7

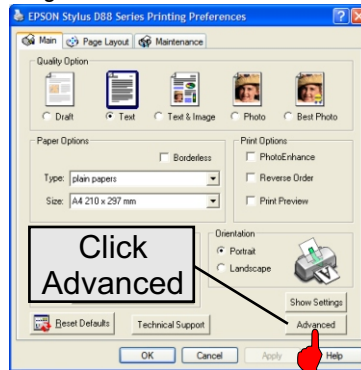


Diagram 8

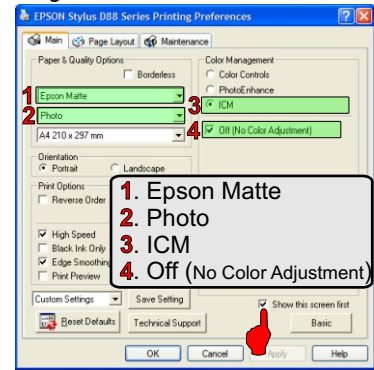


Diagram 9

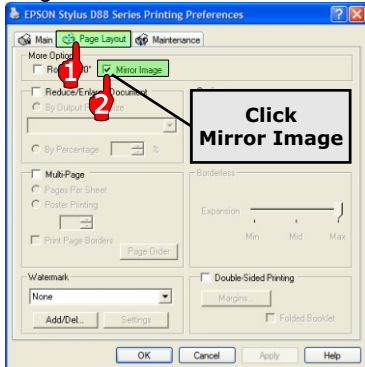


Diagram 10

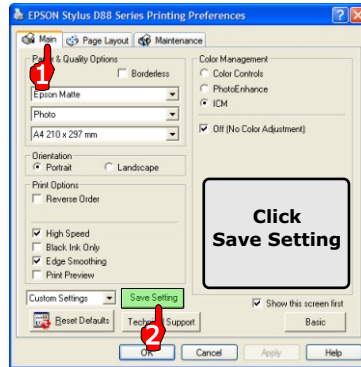
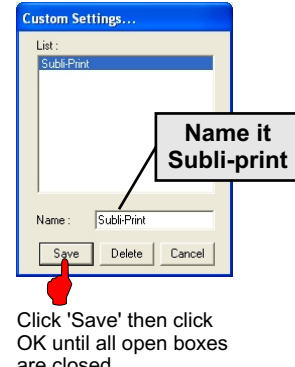


Diagram 11



Click 'Save' then click OK until all open boxes are closed.

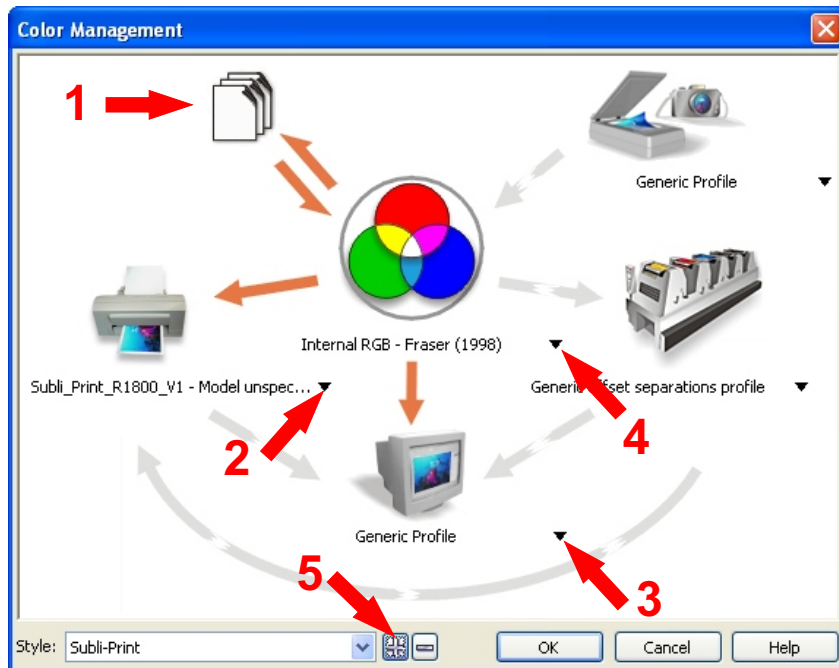
Setting up CoreDRAW 10 onwards

Before you start this section you will need to download the Xpres Subli-Print colour profile from the Xpres website. The address is www.xpres.co.uk/technical.php You can also find the profile on the Subli-Print CD supplied with the bulk feed system. This disk can also be sent out upon request.

Close CoreDRAW. When you have downloaded the '**Subli_Print_D88_V1.icm**' colour profile, right click on it and choose 'Install Profile' from the top of the menu. **Note:** *The profile will install automatically and will not give any feedback. Also on some systems you will not be able to see the 'Install Profile' option. If this is the case change the .ICM extension to .ICC then re-try.*

Start CoreDRAW and click on Window > Colour Palettes. Tick the 'Default RGB palette'. Repeat the process then un-tick 'Default CMYK palette'. Now click on Tools > Colour Management. You will now see the colour management dialogue box appear as in diagram 1 below.

Diagram 1

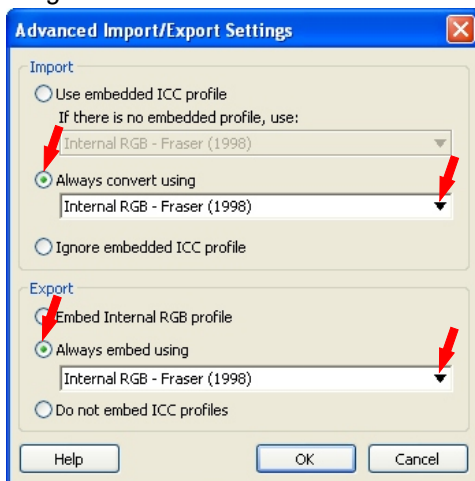


Note: For CoreDRAW X3 users click on 'RGB (used in versions previous to CoreDRAW X3', under the 'Colour mode used for effects' section at the bottom.

First, all the (Orange/Grey) arrows need to be set as shown above. To change the colour of the arrows (Orange colour switched on, Gray colour switched off). To turn the arrows on or off just click on the arrow itself.

1. Configure Import-Export Settings: Click on the image of the paper to bring up the window shown below (diagram 2). This window configures how CoreDRAW handles files that are imported to a document.

Diagram 2



Click Import: Always convert Using- Select Internal RGB Fraser (1998) from the drop down menu.

Click Export: Always embed using- Select Internal RGB Fraser (1998) from the drop down menu.

Click OK.

2. Composite Printer: Select the **Subli_Print_D88_V1** printer profile. **Note:** if you cant choose the **Subli_Print_D88_V1** from the drop down menu means the ICC profile is not yet installed on your pc or you may not have restarted Corel since the ICC installation. Close and re-launch Corel.

3. Monitor: Select the ICC profile for your monitor (If you also have Adobe Photoshop on your system you can select the profile you created in Adobe Gamma). You may also check out the website of your monitor manufacturer for ICC profiles for your particular monitor. If you do not have an ICC colour profile use the 'Generic Profile' instead.

4. Internal RGB Space: Select Internal RGB Fraser (1998)

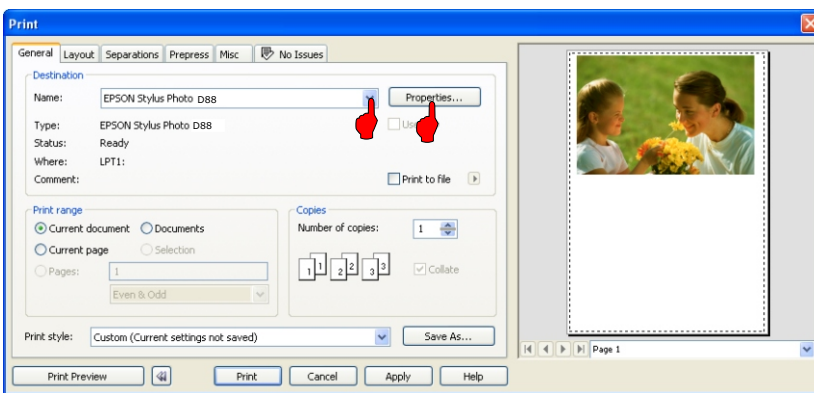
5. Save your settings: Click the + button and name your settings Subli-Print then Click OK.

CorelDRAW's colour management is now setup. You can now work with your images as normal.

Printing with the Subli-Print ICC profile

When you have your image ready on screen, click file > print. You will now see the print dialogue box below (diagram 1).

Diagram 1



The Epson D88 properties will now show (diagram 2). Ensure the Subli-Print setting is highlighted. If it is not click on 'Subli-Print' from the drop down list. Then click OK.

Now click on the Misc tab (diagram 3) and ensure the **Subli_Print_D88_V1** is ticked.

Note: Ensure the 'Apply ICC profile' is un-ticked when using other printers.

Now click the print button.

Diagram 2

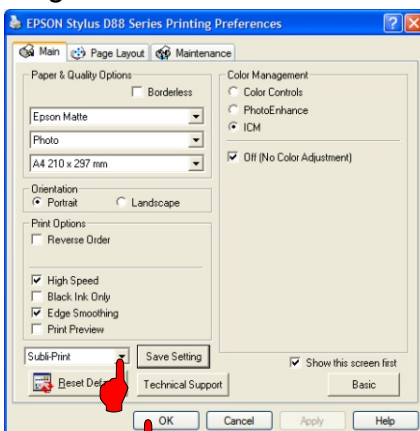
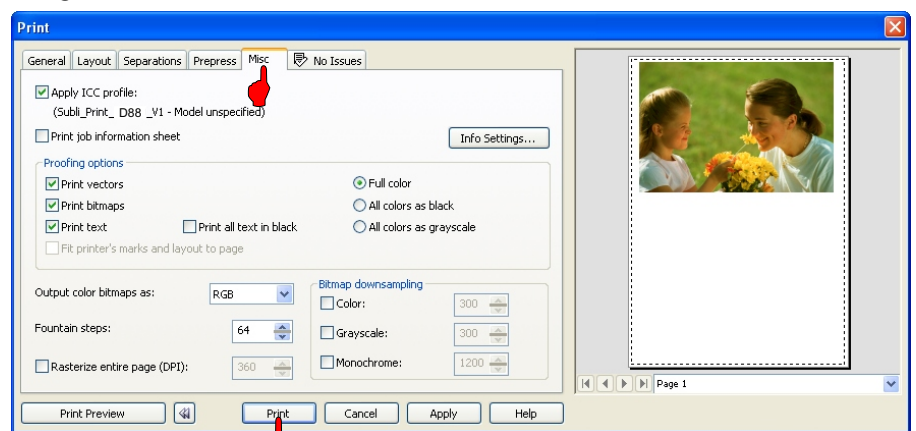
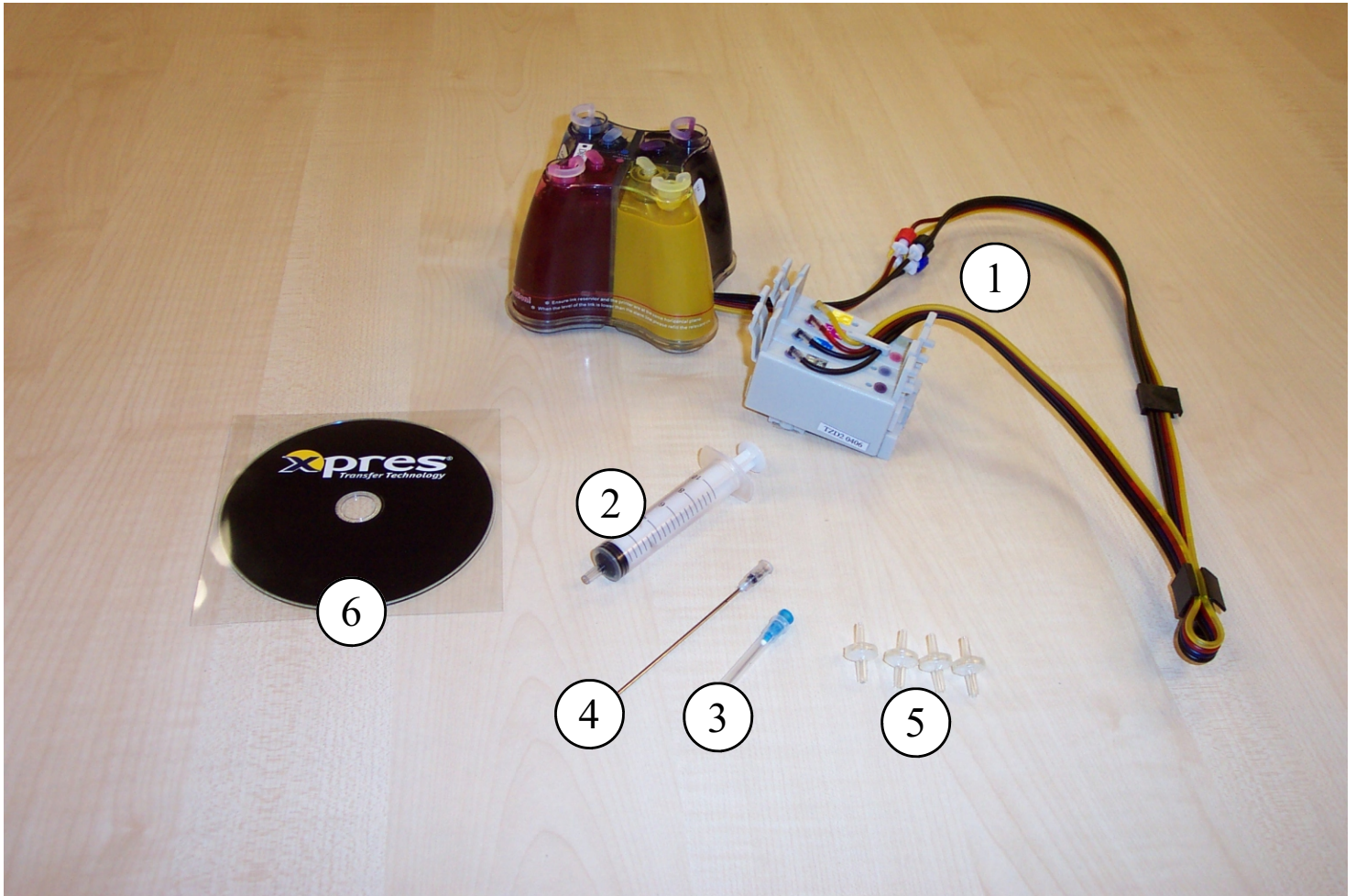


Diagram 3





ITINERY

1. Bottles and cartridge assembly (pre-filled and including 2 small clamps for fitting to printer housing).
2. 10ml Syringe
3. Small needle (only required for re-priming, see page 7)
4. Large extension
5. 4 x air filters
6. Subli-Print CD (including colour correction profile and instructions)

Turn on the printer and press the 'ink' button. When the printhead has moved to the cartridge removal position unplug the mains cable from the printer.

This allows the printhead to be manually moved.

Remove any cartridges from the machine.



Remove all the small bungs from the bottles. (do not throw these away as you will need these for re-filling the bottles)



Using the long needle attachment on the 10 ml syringe draw any ink out of the centre chamber (through the small hole).



Repeat this on each colour then fit the air filters supplied.



Place the bottles to the left of the printer as shown.

**NEVER PLACE THE BOTTLES
HIGHER THAN THIS**

(If the bottles are placed higher then the ink may siphon into the bottom of the printer.)

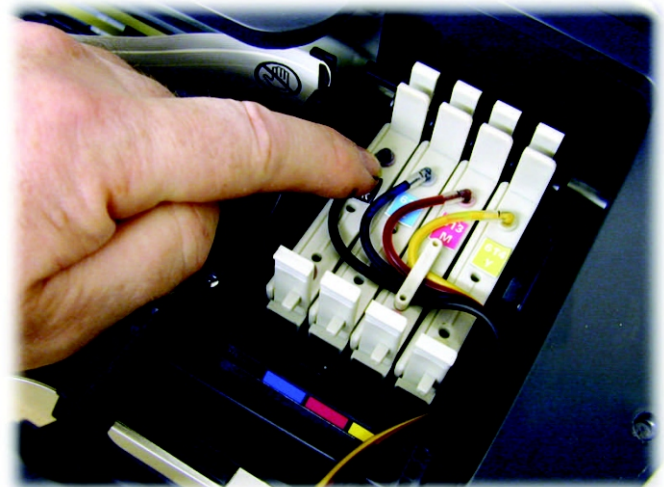


Make sure there are no twists in the tubing.

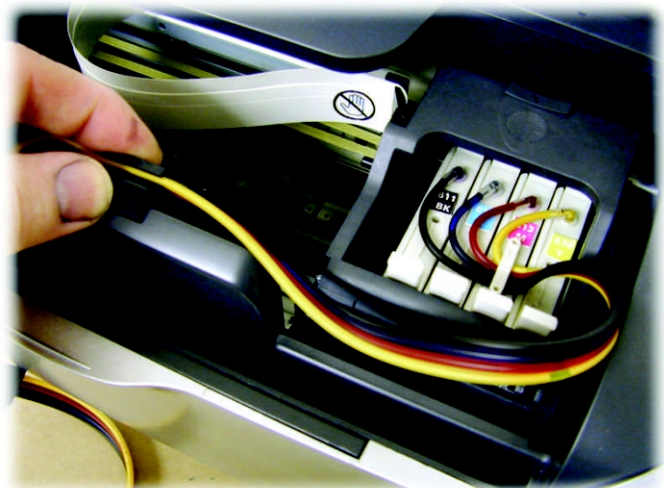
Feed the cartridges through the opening in the printhead lid. (If you have previously removed this lid already do not worry as it is not necessary for the operation of the system).



Push the cartridges down firmly until they snap into position. Close the printhead lid making sure not to trap the tubing.



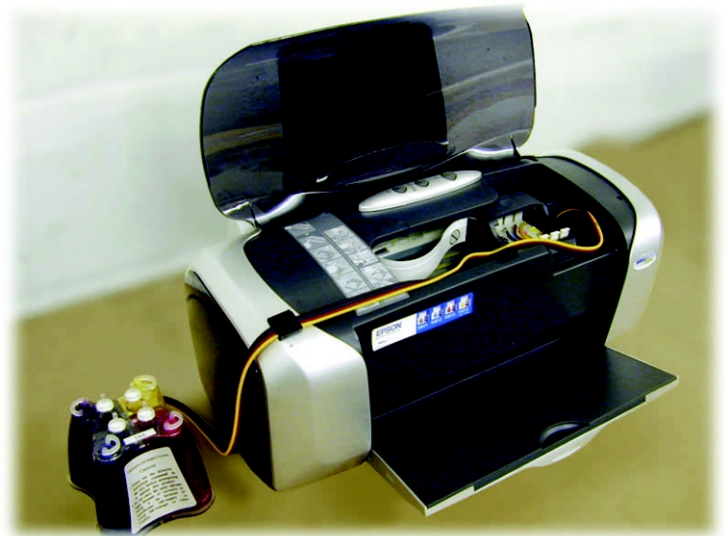
Remove the tape from the sticky pad and firmly press the tube support into place as shown. Make sure the tubing is not twisted..



Remove the backing tape from the black clamp on the tubes and fit it to the printer housing as shown.

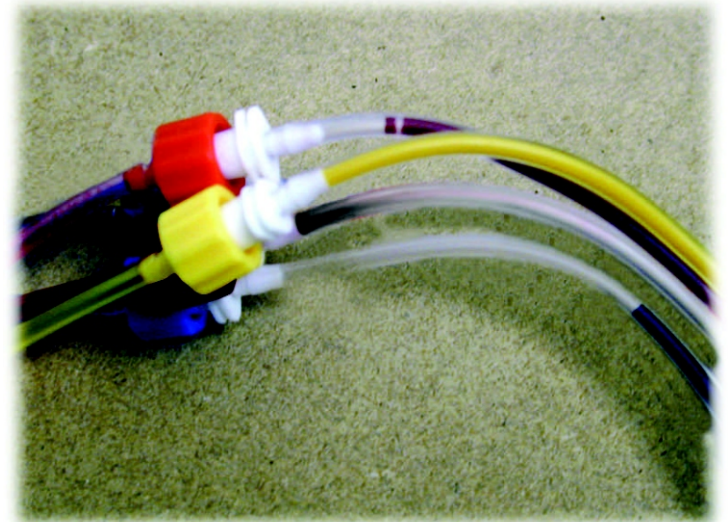


Plug the printer back into the mains supply and the printhead will move back and forth then perform it's initial ink charge.



During this ink charge you should see the ink flowing through the tubes near the connectors.

The air you may see in the tubes is not significant and will not affect the operation of the system in any way.



After the ink charge print out a nozzle check to see if all the colours are printing correctly. If they are, you are set to go. If not perform a head clean and test the nozzle check again. You should see an improvement on the next nozzle check. If still not perfect you can perform one or two more head cleans (**do not overdo this exercise**) until you get a good nozzle check.

Occasionally a printer will stubbornly refuse to print a perfect nozzle check after a couple of head cleans. There can be a number of reasons for this including the fitting of a dye sublimation system for the first time or a printer being left for a long time without running any prints.

One way of curing this is to force the printer into a 'power clean'. To do this you will need to send a good size image to the printer (use an 8" x 10" [20cm x 25cm]) and when about a quarter of the image has printed, press (and hold down) the ink button on your printer (Shown on page 2).

After you have held this button down for 5 or more seconds the printer will pause printing (eject the paper), perform a head clean and then carry on printing where it left off (it is not necessary to waste transfer paper on this exercise).

You may have to hold this button down again 1-2 more times during the print – you should be able to see if the banding is disappearing. If you have had to press the button for the 3rd time the printer will now perform a 'power clean'. Print a nozzle check immediately after this. If this nozzle check is good, you are set to go. If there are still problems with it leave the printer to settle for at least half an hour before printing out another nozzle check.

If there has still been no improvement you can carry out this 'power clean' exercise one more time including the half an hour settling time afterwards.

Re-filling the bottles

Remove the air filter and replace it with the small rubber bung (that you did not throw away).

Remove the large rubber bung.

This prevents the centre chamber filling up with ink.

(6 colour set shown here)

Fill the chamber through the large opening.

Replace the large rubber bung first!

Then remove the small bung and replace the air filter.



If this sequence is not followed and the centre chamber is allowed to fill with ink use the procedure to remove the ink as shown on page 2.

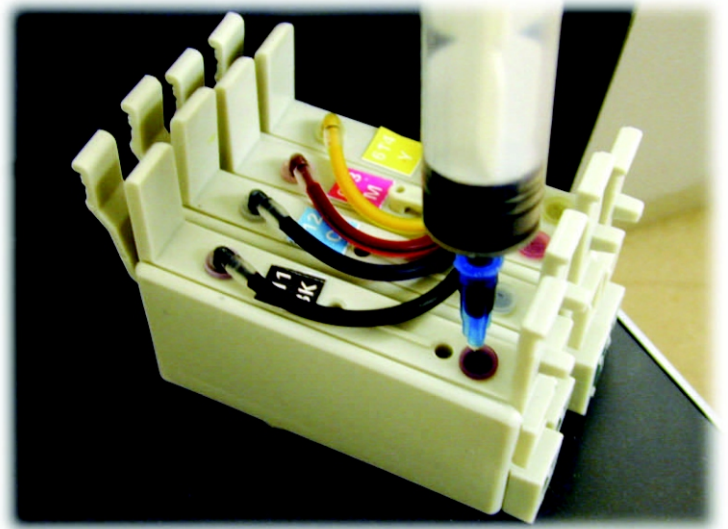
Re-priming a system that air has been allowed to infiltrate.

If ink is allowed to fall below the recommended minimum levels on the bottles it may be possible for air to get into the tubing and ultimately into the cartridge. This will prevent the printer working (colours completely missing on nozzle checks).

This is completely different to the tiny amount of air in the tube during first install and the air needs to be removed to re-prime the system.

Press the ink button on the printer and remove the cartridge set.

Use the syringe and needle provided. Push the needle through the rubber grommet.



Draw the syringe back until ink only (no air bubbles) is being pulled into the syringe.

Replace the cartridge set into the printer and follow the procedure on page 5 for charging the printhead again.

Working with templates

In this section you will learn how to open a sublimation template, import an image and use the power clip tool to fit the image to the template. For this exercise we will use the 9cm² square coaster.

If you have had an installation by an Xpres engineer, you will find the templates in a folder on your desktop called 'Xpres'. Otherwise you can either download these from the Technical Support section of our website www.xpres.co.uk/technical.php You can also find these on the Xpres Technical CD, and Subli-Print CD.

Click File > New From Template (diagram 1), click on the 'Browse' tab then point it towards where your Sublimation templates are stored. Select the 'Coaster square.cdt' then click OK.

Diagram 1

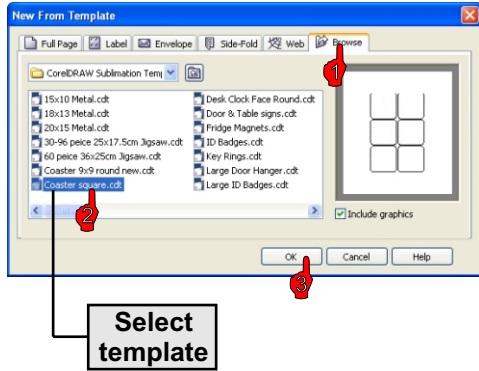
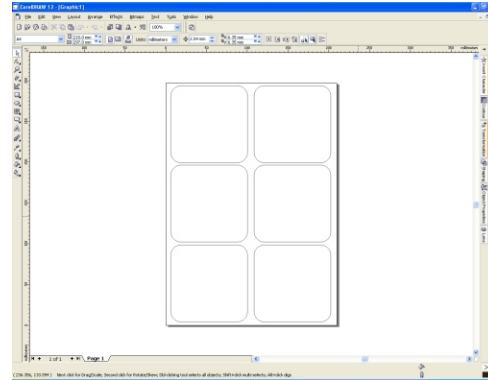


Diagram 2



You will now see six square coaster templates open as in diagram 2. For this exercise we will work with one only. Click on one of the coaster templates and hit the delete button on the keyboard. Repeat this process until you are left with one. Click and drag the template to the centre of the page (diagram 3).

Diagram 3

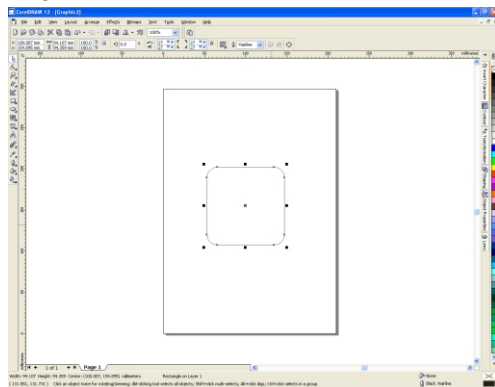
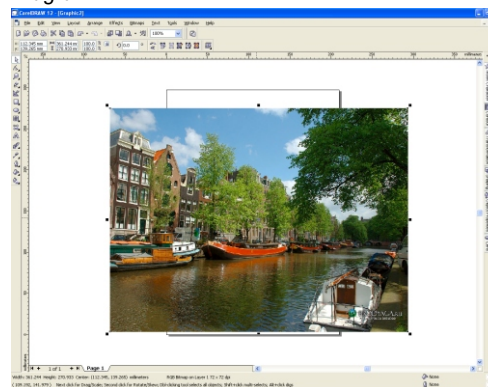


Diagram 4



Import your image by clicking on File > Import. Select your image from the browse window and click the import button. You will now see you image as in diagram 4. Click on the corner selection handles to down size the image slightly larger than the template, as in diagram 5 below.

Diagram 5

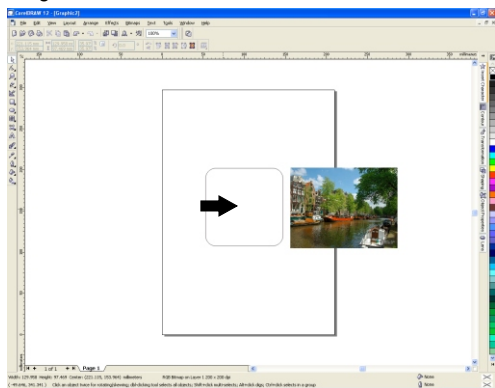
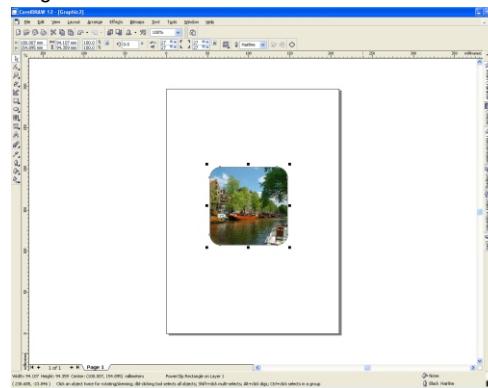


Diagram 6

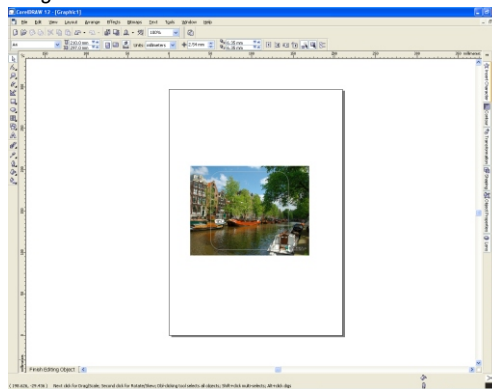


Click on Effects > Power clip > Place inside container. You will now see a large black arrow appear, click on the edge or inside to power clip the object to the template. You will now see the image appear inside (fitted) to the template as in diagram 6.

Working with templates continued

If your image does not fit the power clip correctly first time, right click on the image and choose 'Edit Contents' from the drop down menu (diagram 1). You can also click on Effects > Power Clip > Edit Contents. Drag the image (you will see the image and the template on the screen) until you have it in the right place. You can even re-size the object in the 'Edit' state. When you are happy with the image placement, right click and choose 'Finish Editing This Level', from the drop down menu. You can also access this by clicking on Effects > Power Clip > Finish Editing This Level.

Diagram 1



Your image is now ready to print. Refer to page 3 on printing with the .ICC colour profile.

Tips on using templates

All Xpres Sublimation templates are slightly larger than the actual substrate. You can leave the border of the template visible as this helps to line up the substrate before taping it onto the transfer paper (use XP6006 Heat Tape to secure the substrate to the transfer paper).

The only template you cannot leave the border on is the mug template as this will show up when printed.

To duplicate your image once fitted to the template refer to page 11 on duplicating objects

Subli-Print ink tips

The next section is applicable to Xpres Subli-Print bulk feed systems.

Before inserting the Subli-Print ink into the Epson D88 ensure you have flushed/primed the printer with the standard Epson ink supplied with the machine. Ensure that you have a perfect nozzle check pattern as in diagram 1 below.



Important: After inserting the Subli-Print inks into the Epson D88, leave the printer for at least an hour before use to allow the inks to settle.

Before printing with the Subli-Print inks ensure you have all four primary colours printing like the nozzle check pattern above (diagram 1) or refer to the original bulk feed instructions on pages 4-7.

If you have breaks in the nozzle check pattern (diagram 2) run the cleaning process (no more than three times) followed by a nozzle check pattern. If any more than three cleans are required, leave the printer to rest for at least thirty minutes before commencing the cleaning process. **Tip:** Do not over clean the Epson D88 as this just wastes ink and in most cases the nozzle check pattern will deteriorate rather than improve.

Gaps in the pipes from the feeder unit to the head is normal. Ink will fill the tubes under normal usage. Refer to the bulk feed fitting instructions on page 4 of this manual for more information.



Sublimation paper usage and tips

XP4072a (A4) & XP4073a (A3) is used for all hard surface and fabric substrates.

Print onto the bright white side only.

Introducing CorelDRAW & its tools

CorelDRAW is an extremely powerful program of which you will probably only need to use half of the tools and features of the program. In this section we will introduce you to the tools in CorelDRAW and what they do and also take you through the most common tasks you will need to complete in CorelDRAW.

Below is an image of the toolbox in CorelDRAW with explanations of the tools based on Corel 11.



- Pick Tool**
- Shaping Tools**
- Zoom Tools**
- Drawing Tools**
- Rectangle Tools**
- Ellipse Tools**
- Polygon Tools**
- Basic Shapes Tool**
- Text Tool**
- Interactive Tools**
- Eyedropper Tools**
- Outline Tool**
- Fill Tool**
- Interactive Fill Tool**

Each of the tools shown here except the Pick tool and the Text tool have extra tools hidden in what are called flyout menu's, to access a fly out menu hold the left mouse button down on the corresponding button and the menu will pop out allowing you access to the extra tools.

Each of the flyout menus are shown below giving you a breakdown of where all the tools are stored, on the next page we will go over the most common tools and their functions.

Shaping Tools



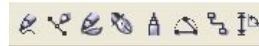
In order:
Shape Tool, Knife Tool, Eraser Tool, Smudge Brush, Roughen Brush, Free Transform Tool

Zoom Tools



In order:
Zoom Tool, Pan Tool

Drawing Tools



In order:
Freehand tool, Bezier Tool, Artistic Media Tool, Pen Tool, Polyline Tool, 3 Point Curve, Interactive Connector, Dimension Tool

Rectangle Tools



In order:
Rectangle Tool,
3 Point Rectangle

Ellipse Tools



In order:
Ellipse Tool,
3 Point Ellipse Tool

Polygon Tools



In order:
Polygon Tool,
Graph Paper Tool,
Spiral Tool

Basic Shapes Tools



In order:
Basic Shapes Tool, Arrow Shapes Tool,
Flowchart Shapes, Star Shapes, Callout Shapes

Interactive Tools



In order:
Blend Tool, Contour Tool,
Distortion Tool, Envelope Tool
Extrude Tool, Shadow Tool,
Transparency Tool

Eyedropper Tools



In order:
Eyedropper Tool,
Paintbucket Tool

Outline Tool



In order:
Outline Pen Tool, Outline Colour Tool, No outline,
Various widths of line, Colour Docker Window

Interactive Fill Tools



In order:
Interactive Fill, Mesh Fill

Fill Tool



In order:
Fill Tool, Fountain Fill, Pattern Fill, Texture Fill,
Postscript Fill, No Fill, Colour Docker Window

CorelDRAW's most common tools

The Pick Tool

This is the main tool that you will use in CorelDRAW, it is used for manipulating anything onscreen in the main window and also for selecting and using any of the other tools, holding the left mouse button and dragging a box will select anything within the area that you drag over, clicking an object onscreen with a single left mouse button click will select individual objects.

The Zoom Tool

When you select the Zoom tool your cursor will change to a magnifying glass with a plus sign in the lens, to zoom in on an area click the left mouse button, to zoom out click the right mouse button, to zoom in on a certain area click and drag around the area with the left mouse button and you will zoom to the selected area.

The Bezier Tool

Open the Curve flyout and click the Bézier tool. Click where you want to place the first node, and drag the control point in the direction you want the curve to bend. Release the mouse button. Position the cursor where you want to place the next node, and drag the control point to create the curve you want. Double-click to finish the curve.

The Shape Tool

This tool is used in conjunction with the Bezier Tool to curve lines.

This tool can also be used to alter the shapes of objects and to change the spacing on text.

The Rectangle, Ellipse, Polygon & Basic Shapes Tools

All of these tools work on a very simple basis in that you click and hold the left mouse button down and drag out the shape that you would like to the sizes you require.

The Text Tool

Simply click on screen with this tool and then type as normal with the keyboard, you will see that you have all the standard options at the top of the screen such as font type and size as well as the standard formatting options.

The Outline Tool

This tool lets you change the properties of any object on screen to change the width of the outside edge by selecting the object first with the Pick tool and then choosing the Outline tool to make your changes.

The Fill Tool

The Fill tool works in exactly the same way as the Outline Tool but alters the properties of the inside of an object i.e the colour fill of it, by selecting the object first then choosing the Fill tool to make your changes.

The Interactive Tools

These tools are a collection of tools that will allow you to add artist effects to any object in the main CorelDRAW window such as shadows, contours and transparencies etc.


Common CorelDRAW tasks

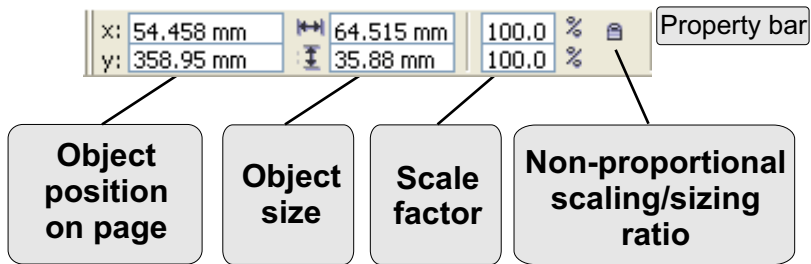
Grouping & Ungrouping

CorelDRAW allows objects to be grouped with other objects this means that when one object is moved or resized and other objects grouped with it will also have the same action applied to them. To group objects, use the pick tool to select the objects and either go to your arrange menu, then select "Group" or click on the button in the menu bar labeled "Group", to Ungroup do the same action but select the "Ungroup" option.

Common CorelDRAW tasks continued

Sizing images


There are many ways to resize an object in CorelDRAW. You can click and drag the selection handles around the object by using the  pick tool.



You change the dimensions of an object proportionally by preserving its aspect ratio. You can size an object's dimensions by specifying values or changing the object directly. Scaling changes an object's dimensions by a specified percentage. You can change an object's anchor point from its centre to any of its eight selection handles.

You can also click on the object you wish to re-size and type in the object size box. If you lock the non-proportional scaling/sizing ratio the width and height of the object will scale/size in proportion. If you un-lock it, you can make the object any size you wish.

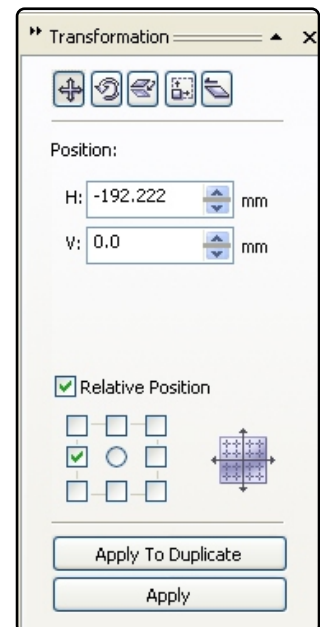
Duplicating objects

There are a couple of ways you can duplicate objects on CorelDRAW. The easiest but not that accurate in terms of plotting your design out is to select the object with the pick  tool, then press CTRL+D. You can then place the image manually on the layout screen.

The accurate way to duplicate objects is to use the Transformation docker window. Click on Arrange > Transformations > Position. The Transformation docker window will pop up on the right hand side in CorelDRAW. When you select an object the Position, relative position and the apply buttons will illuminate. The example on the right shows an object which is selected and ready to be duplicated. To increase or decrease the horizontal positioning enter the size or click the up/down arrows. This function specifies the duplication distance from the original object.

The relative position option is there to select where you want the duplicated object to appear. On the example I have selected the duplicate to appear on the left of the original object. Now click 'Apply To Duplicate' to duplicate the object(s).

From the transformation docker window you can also select Rotate, Scale and mirror, Size and skew.



Sublimation printable's hints and tips

Some sublimation printable's (substrates) have a protective coating on which must be removed before pressing. The most common of these is the desk clocks, all pre-cut metal, hardboard placemat's and coasters. Also check other plastic products for coatings.

Ensure the substrate is facing up when placed on the heat press and the transfer is face down onto it. If this is not done you will get a faded or no image transferred to the substrate.

Sublimation mugs differ in time and temperature depending which mug you are using. All times and temperatures below are based on the Xpres Mug Press 1000.

XP5013 Coated ceramic mugs - Time 3min 30sec at 200°C (increase time to 4min 30sec for top to bottom mug printing).

XP5011 Colour change mugs - Time 3min 30sec at 190°C (increase time to 4min 30sec for top to bottom mug printing).

XP5015 Coated metallic mugs - Time 3min 30sec at 200°C (increase time to 4min 30sec for top to bottom mug printing).

XP5014 Coated porcelain mugs - Time 3min 30 sec at 200°C (top to bottom is not recommended for this type of mug).

XP5013 and **XP5014** are dishwasher safe.

Tip: Refer to the Xpres sublimation printables wall chart or product information sheets for times and temperatures for other products.

General troubleshooting and tips

Useful CorelDRAW tips

To ensure CorelDRAW performs at its best, click on Tools > Options, click on 'snap to objects' and un-tick the 'snap to objects on (ALT+Z)'. Now click on the + next to 'Text' and click on 'Quick correct'. Un-tick all five boxes. Depending on your system memory you can increase the memory usage available to CorelDRAW (default 25%). If CorelDRAW is sluggish and running out of memory try increasing this (20% increments recommended).

To see the actual size of your text in CorelDRAW (rather than font points) activate the 'Transform' toolbar. Click on 'Window', scroll down to 'Toolbars' and tick 'Transform'. Drag the toolbar to the top and drop it to place it in the toolbar cluster.

Print quality on ceramics, plastic, metal etc appears weak?

1. Check the time, temperature and pressure as illustrated in the printing information guide.
2. Ensure you have installed the Xpres Subli-Print profile correctly.
3. Check whether the substrate is facing up on the heat press.
4. If you are printing mugs top to bottom ensure you have pressed them for the correct times and temperatures (see page 11 for more information).

Subli-T hints and tips

• Is the transfer permanent on Subli-T's?

Yes as the process is direct to the polyester.

• When heat applying the press leaves a severe press mark?

The pressure on the heat press is set too high. Reduce the pressure.

Why is the image on mugs blurred after printing?

Ensure you have dipped the mug in water immediately after printing, and/or increase the pressure on the mug press.

The sublimation transfer colour appears very washed out on the transfer?

All sublimation ink appears weak until heat applied, colours will change and become vibrant.

Ensure you have applied the Subli-Print ICC colour correction software. See pages 1-3.


Ensure you are printing onto the correct side of the transfer paper.

For XP4072a/73a Sublimation paper, print onto the bright white side.

Tips on cropping images

After importing your image into CorelDRAW you may need to crop (down size) the image. There are 2 ways you can do this.

1. Highlight your image with the pick tool, then click on the shape tool (F10) in CorelDRAW, hold down the CTRL key then resize your image by moving the selection handles in the corner of the image. **Tip:** While in the shape tool you can also add new node and convert the lines to curves.

2. If you double click on the image in CorelDRAW it should launch Corel PHOTO-PAINT. Use the crop tool  to achieve similar results as above.

Check out the FAQ section on the Xpres website www.xpres.co.uk/technical.php for more hints and tips.